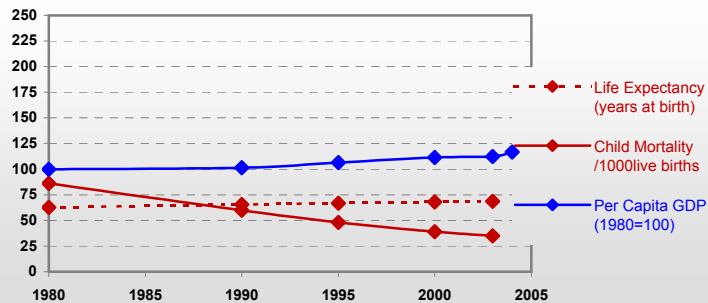


Brazil



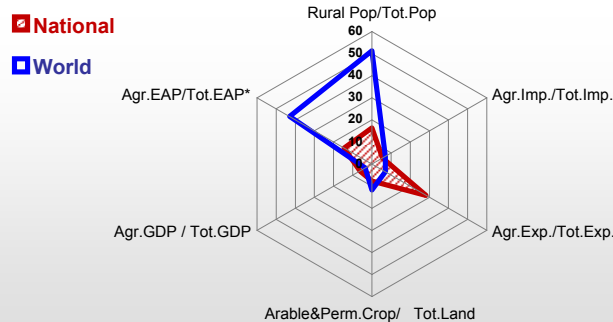
General / Welfare

Population ^{04 *}	180 654
Per Capita GDP ^{04 **}	3 636
Agricultural GDP/Ag.Population ^{04**}	1 589
Total Exports ^{04 ****}	65 946
Total Imports ^{04 ****}	96 475
Agric. External Assistance ^{03 ***}	114 955
Food Consumption Inequality (G) ^{ly}	0.18
Income Inequality (G) ^{ly}	0.59
Land Inequality (G) ^{ly}	0.85
Undernourished Population % ⁰¹⁻⁰³	8



* 1000 ** \$ *** 1000 \$ **** Million \$ --- (G) : Gini Coefficient --- GDP at 2000 Constant Prices

Agriculture In The Economy^{ly}



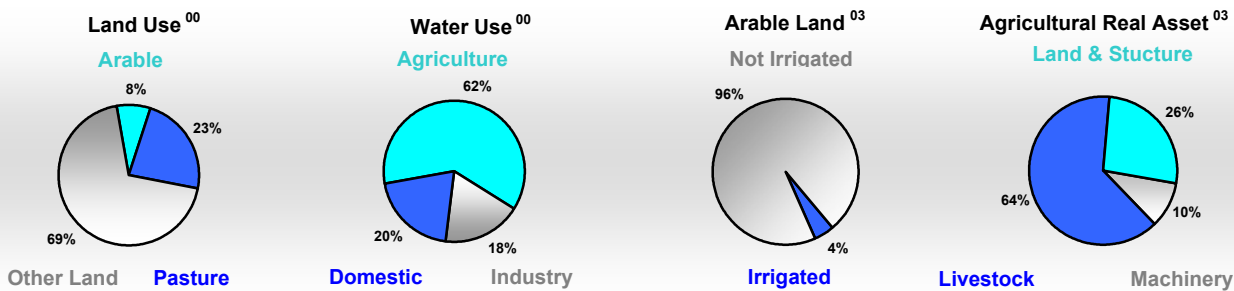
* EAP : Economically Active Population

Resources

Arable Land ^{00 *}	57 640
Permanent Crops ^{00 *}	7 560
Pasture ^{00 *}	196 206
Cattle & Buffaloes ^{04 **}	193 201
Sheeps & Goats ^{04 **}	23 269
Tractors ^{03 / *}	14
Harvesters&Threshers ^{03 / *}	1
Fertilizers Production ^{02 ***}	2 608 732
Fertilizers Consumption ^{02 ***}	7 682 000
Rainfall Index ^{02 (mm)}	1 940

* 1000ha ** 1000heads *** Tonnes N,P₂O₅,K₂O

Resources Distribution

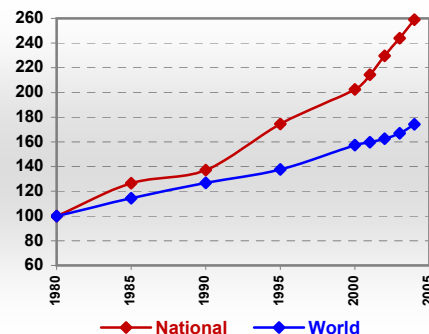


Production

Agriculture^{04 *}		Forestry⁰⁴	
Cereals	63 812	Indust.Roundwood **	110 470
Meat	19 919	Wood Fuel **	136 637
Fruits & Vegetables	43 774	Wood Charcoal *	12 896
Roots & Tubers	27 439	Sawn Wood **	21 200
Pulses	2 984	Wood Based Panels **	6 283
Oilseeds (oil equiv.)	10 351	Wood Pulp *	9 580
Sugar Crops	416 256	Paper, Paper Board *	8 221
Milk	23 455	Fisheries^{04 *}	
Eggs	1 620	Pelagic	155
Stimulants	2 670	Freshwater	420
Tobacco	920	Demersal	208
Fiber Crops	1 507	Molluscs	19

* 1000Tonnes ** 1000m³

Agricultural Production Index



Brazil

Trade ⁰⁴

Agricultural Imports *	3 598
% 4 Major Imports in Agr. Imp.	40
% Agr. Imports in Tot. Imports	5
Fishery Imports *	279
Forestry Imports *	902
Agricultural Exports *	27 215
% 4 Major Exports in Agr. Exp.	48
% Agr. Exports in Tot.Exports	28
Fishery Exports *	427
Forestry Exports *	4 739

* Million \$



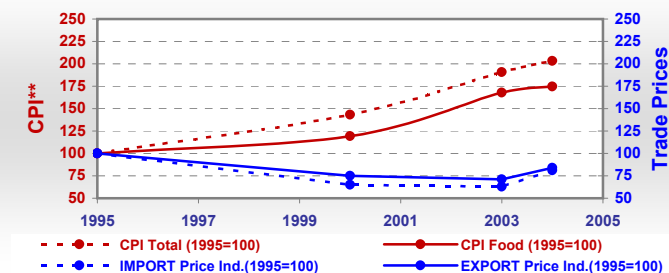
Trade Partners & Products

Major Import Partner	Argentina	United States of Am	Uruguay
Major Exports Partner	Netherlands	China	United States of A
Major Imports	Wheat	Rubber, dry	Malt, barley
Major Exports	Soybeans	Cake, soybean	Chicken meat

Prices

Producer Prices ⁰¹⁻⁰³	\$*	\$Green *
Wheat	94	221
Rice	103	240
Maize	58	135
Soybean	132	310
Coffee	298	690
Tobacco	883	2 070
Cow Milk	109	254
Cattle (Live Weight)	540	1 268
Pig (Live Weight)	381	892
Chicken (Live Weight)	393	919

Consumer and Agricultural Trade Price Indices

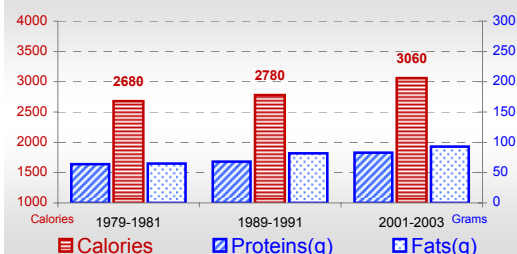


* per Tonne

** CPI : Consumer Price Index

Consumption

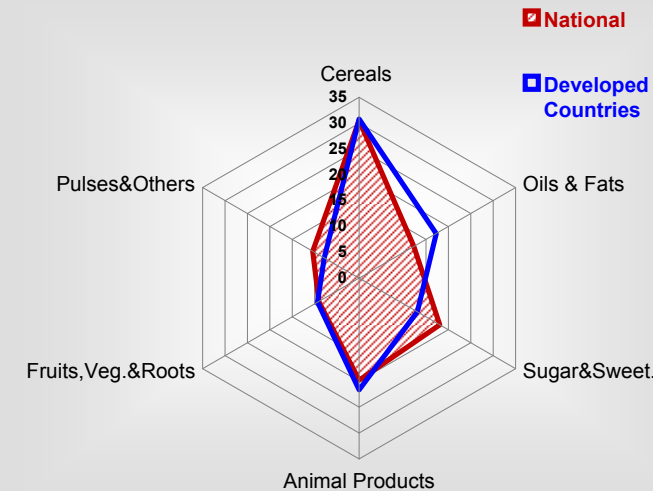
Per Capita Daily Consumption



Per Capita Daily Calorie Intake From Selected Food Items ⁰¹⁻⁰³

Rice	364
Wheat	368
Maize	190
Sorghum	-
Potatoes	28
Cassava	101
Sugar	533
Soybean Oil	255
Palm Oil	17
Milk	195
Anim.Fats(Raw&Butter)	56
Eggs	25
Pigmeat	98
Poultry Meat	134
Bovine Meat	131
Sheep & Goats Meat	4

Source of Dietary Energy Consumption % ⁰¹⁻⁰³



Food Balance ⁰¹⁻⁰³ (1000Tonnes)

Food Groups	Production (+)	Exports (-)	Imports (+)	Stock changes & Other uses (-)	Consumption (=)
Cereals	54 860	682	9 292	43 848	19 622
Veg.oils	5 611	2 181	231	1 338	2 322
Sugar&Sw.	23 889	13 055	26	893	9 968
Roots&Tub.	26 328	98	230	15 806	10 654
Meat	17 223	3 238	61	-2	14 048
Milk	22 396	136	762	2 618	20 403